

# DUS-10,5 COMMON MODE CHOKES

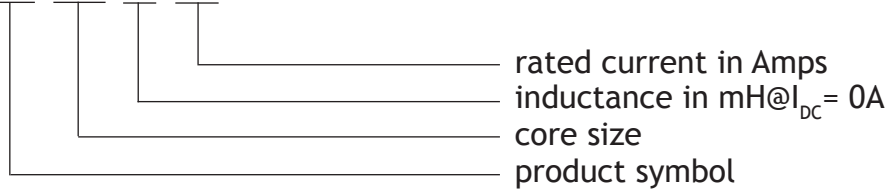


## APPLICATIONS:

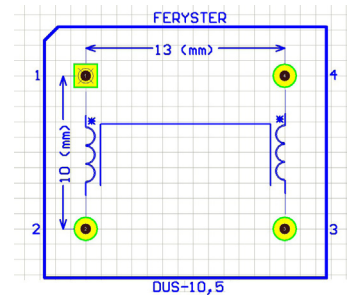
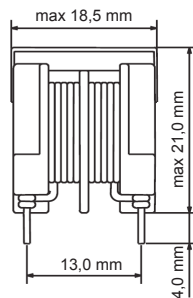
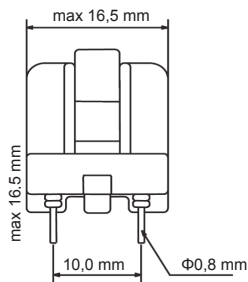
- Suppression of common mode noise
- Line filters
- SMPS
- Electronic ballasts
- Complies with EN 61558-1:2005 and PN-EN 60938-1
- Insulation test voltage: 2100 VAC
- Rated voltage: 250 VAC +10%
- Inductance tolerance: -30%/+50%
- Lower/Upper category temperature: -25°C/+100°C

## ORDERING CODE:

DUS-10,5/47/0,5



## DIMENSIONS:

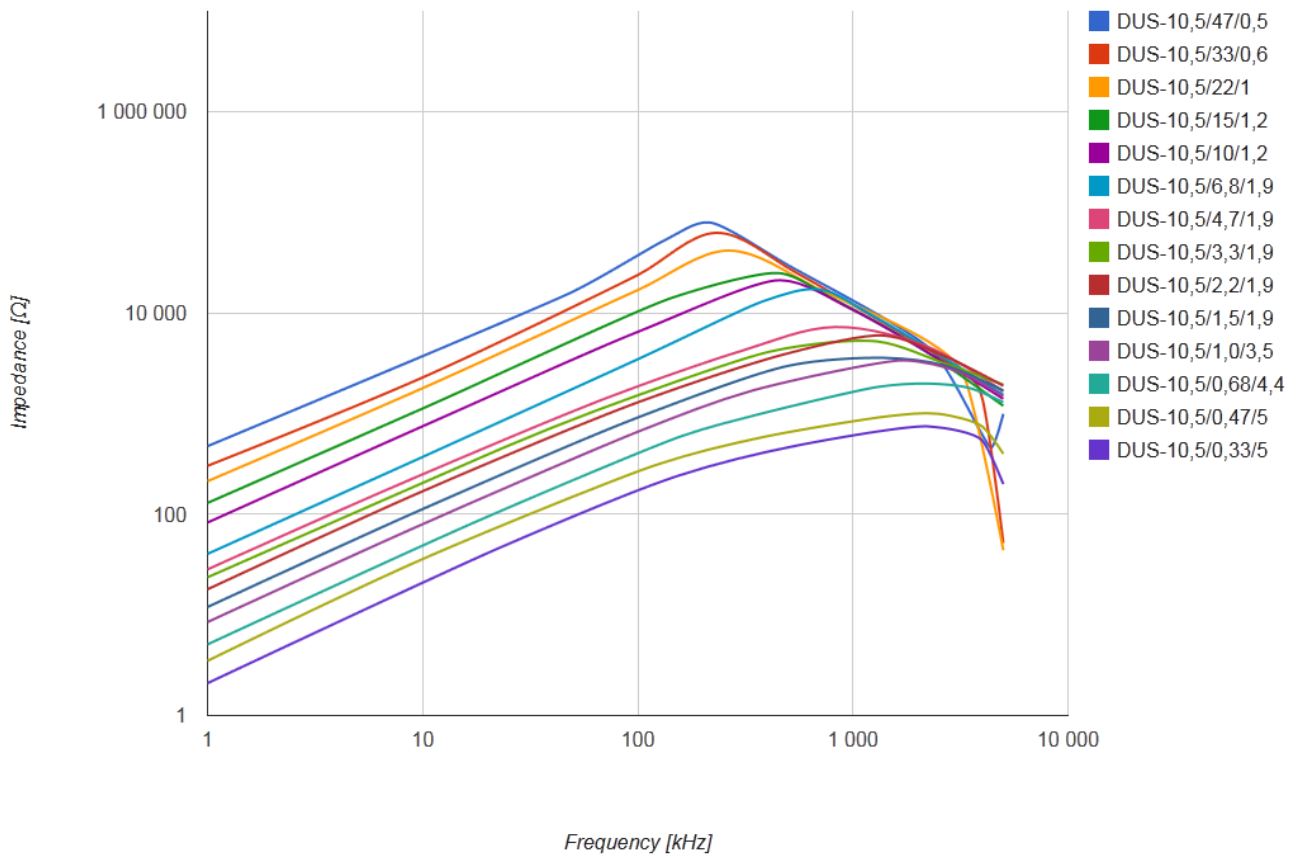


Footprint - Top view

## ELECTRICAL PROPERTIES:

Part number	Marking	$L_{nom}$ [mH]	$I_{max}$ [A]	$RDC_{max}$ [ $\Omega$ ]
DUS-10,5/47/0,5	473.A50 FERYSTER	2X47	0,5	1,450
DUS-10,5/33/0,6	333.A60 FERYSTER	2X33	0,6	1,100
DUS-10,5/22/1,0	223.1A0 FERYSTER	2X22	1,0	0,570
DUS-10,5/15/1,2	153.1A2 FERYSTER	2X15	1,0	0,340
DUS-10,5/10/1,2	103.1A2 FERYSTER	2X10	1,2	0,240
DUS-10,5/6,8/1,9	682.1A9 FERYSTER	2X6,8	1,9	0,125
DUS-10,5/4,7/1,9	472.1A9 FERYSTER	2X4,7	1,9	0,115
DUS-10,5/3,3/1,9	332.1A9 FERYSTER	2X3,3	1,9	0,095
DUS-10,5/2,2/1,9	222.1A9 FERYSTER	2X2,2	1,9	0,080
DUS-10,5/1,5/1,9	152.1A9 FERYSTER	2X1,5	1,9	0,070
DUS-10,5/1,0/3,5	102.3A5 FERYSTER	2X1,0	3,5	0,030
DUS-10,5/0,68/4,4	681.4A4 FERYSTER	2X0,68	4,4	0,018
DUS-10,5/0,47/5,0	471.5A0 FERYSTER	2X0,47	5,0	0,016
DUS-10,5/0,33/5,0	331.5A0 FERYSTER	2X0,33	5,0	0,012

## CHARACTERISTICS:



## X-ON Electronics

Largest Supplier of Electrical and Electronic Components

*Click to view similar products for [Fixed Inductors](#) category:*

*Click to view products by [Feryster](#) manufacturer:*

Other Similar products are found below :

[MLZ1608M6R8WTD25](#) [MLZ1608N6R8LT000](#) [MLZ1608N3R3LTD25](#) [MLZ1608N3R3LT000](#) [MLZ1608N150LT000](#)

[MLZ1608M150WTD25](#) [MLZ1608M3R3WTD25](#) [MLZ1608M3R3WT000](#) [MLZ1608M150WT000](#) [MLZ1608A1R5WT000](#)

[MLZ1608N1R5LT000](#) [B82432C1333K000](#) [PCMB053T-1R0MS](#) [PCMB053T-1R5MS](#) [PCMB104T-1R5MS](#) [CR32NP-100KC](#) [CR32NP-](#)

[151KC](#) [CR32NP-180KC](#) [CR32NP-181KC](#) [CR32NP-1R5MC](#) [CR32NP-390KC](#) [CR32NP-3R9MC](#) [CR32NP-680KC](#) [CR32NP-820KC](#)

[CR32NP-8R2MC](#) [CR43NP-390KC](#) [CR43NP-560KC](#) [CR43NP-680KC](#) [CR54NP-181KC](#) [CR54NP-470LC](#) [CR54NP-820KC](#) [CR54NP-8R5MC](#)

[MGDQ4-00004-P](#) [MGDU1-00016-P](#) [MHL1ECTTP18NJ](#) [MHL1JCTTD12NJ](#) [PE-51506NL](#) [PE-53601NL](#) [PE-53630NL](#) [PE-53824SNLT](#) [PE-](#)

[62892NL](#) [PE-92100NL](#) [PG0434.801NLT](#) [PG0936.113NLT](#) [PM06-2N7](#) [PM06-39NJ](#) [HC2LP-R47-R](#) [HC2-R47-R](#) [HC3-2R2-R](#) [HC8-1R2-R](#)